

New Industrial Premises in Central Cambridge



HIGH PROFILE INDUSTRIAL PREMISES FOR LEASE - BY NEGOTIATION



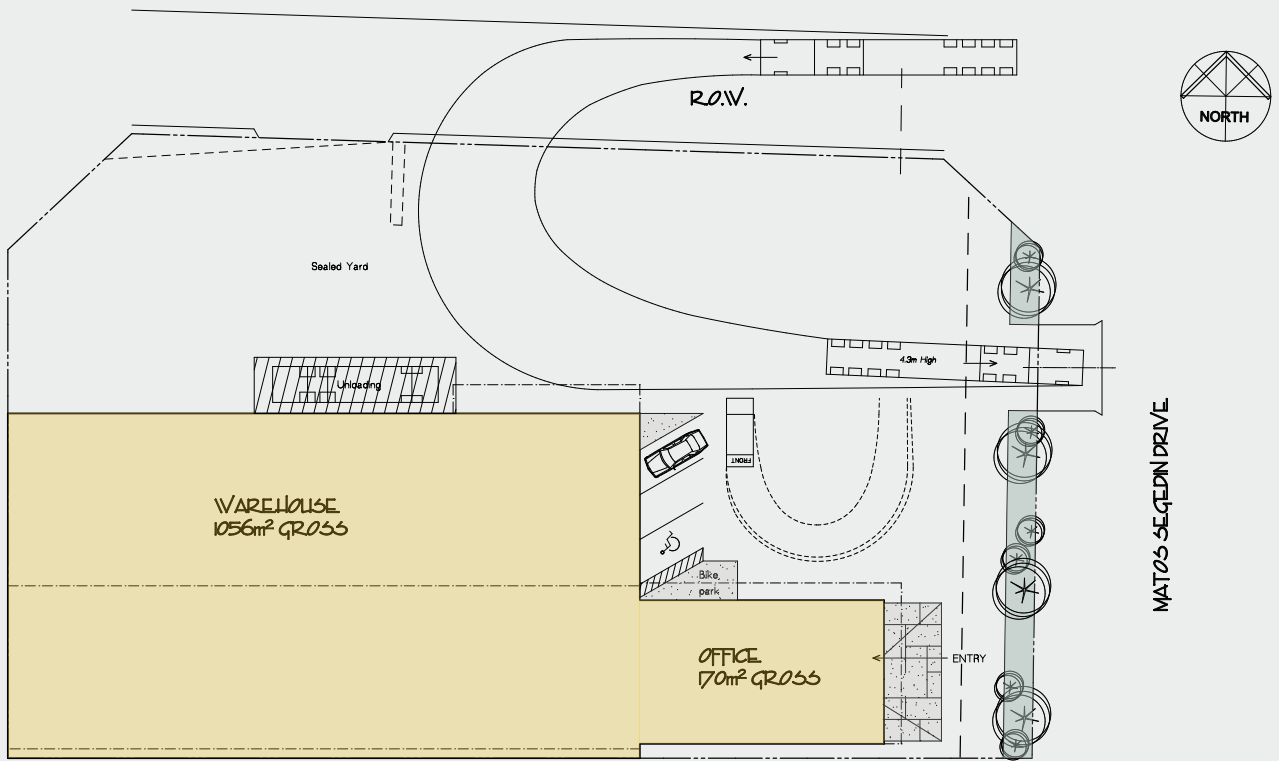
1056m² Warehouse | 170m² Office Space | 2997m² site

PROPERTY DETAILS:

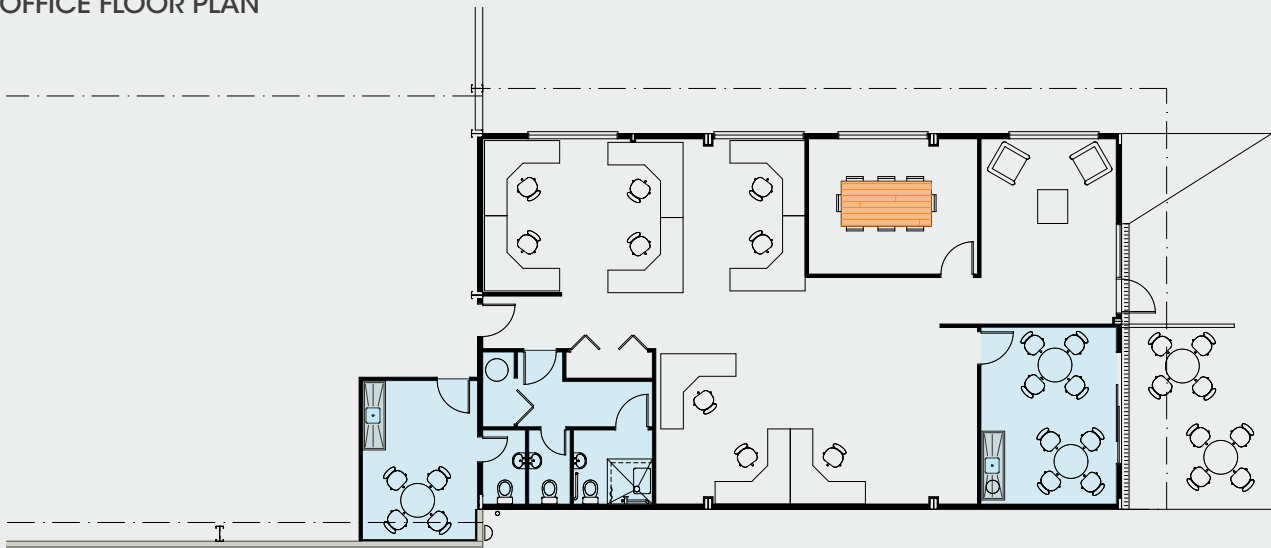
- Consented warehouse/workshop
- Estimated completion date early 2024
- Industrial precinct with easy access to the highway network
- 1056m² consented clear span warehouse/workshop
- Road frontage site
- 170m² office space
- Additional lunch room and amenities in the warehouse
- 6m knee with two automated roller doors
- Sealed yard area
- Three-phase power available

Call Libby Cochrane for further information: 021 773 609 - libby@cochrane-group.co.nz

SITE PLAN



OFFICE FLOOR PLAN



THE LOCATION

Matos Segedin Drive , Cambridge

